



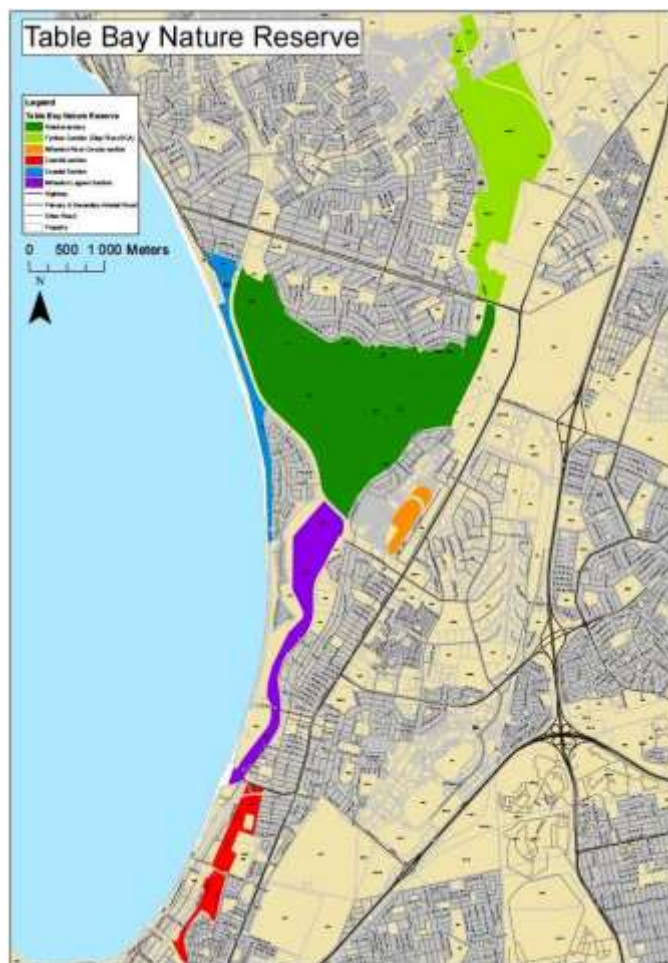
Koos Retief

Biodiversity Area Manager: Milnerton

T: 021 444 0315 E: jacobusi.retief@capetown.gov.za



CONTENTS	Pg.
1 EXECUTIVE SUMMARY	1
2 HIGHLIGHTS & CHALLENGES	2
3 CONSERVATION PLANNING	3
4 FLORA	4
5 FAUNA	5
6 SOIL	6
7 WATER	7
8 FIRE	8
9 PEOPLE, TOURISM & EDUCATION	9
10 STAFF	10
11 LAW ENFORCEMENT	11
12 INFRASTRUCTURE & EQUIPMENT	12
APPENDIX A: MAP OF RESERVE	13
APPENDIX B: PRESS ARTICLES	14



For the Nature Reserve webpage, click the link or type www.capetown.gov.za/tablebaynr in your browser.

1 EXECUTIVE SUMMARY

- The Table Bay Nature Reserve's **quarterly report circulation** has increased to over 1400 people receiving copies of the quarterly report and important notices from the Nature Reserve.
- **Tenders for the provision of a professional service provider to conduct a geohydrology study and produce a hydrodynamics model** were received and evaluated during this quarter.
- **Several wildfires** occurred in the Nature Reserve this quarter.
- **The use of the Nature Reserve's visitor facilities, and income generated from visitors**, has reached an all time high.
- **A new staff member** was added to the Rietvlei Water Area's visitor control team. Trevor Rieb was transferred from the Regional Compliance Management team to the post of Visitor Control Officer.
- **Three nature conservation students** that were employed at Table Bay Nature Reserve succeeded in meeting all the requirements for being awarded the National Diploma.

2 HIGHLIGHTS & CHALLENGES

2.1 The fishing holiday programme, conducted over two weeks during December, once again lured many children to the Rietvlei Water Area. This was seen as a successful event, judging by the numbers of fish caught, not to mention the excitement experienced by the children.

The next fishing holiday programme will be conducted during the April holidays of 2015. Below are some photographs of the happy faces as they land their catches (see Figures 1-2).



Figure 1. Johan Matthee assisting Vanessa Guhr with her catch.



Figure 2. Aiden Gerber and Noor Ahmed Parker landing a fish.

2.2 A strong increasing trend in the usage of the Nature Reserve continued since 2010. The graphs below indicate how the number of visitors tripled, and income collected at the gate doubled in the last four years (see Figures 3-4). This is due to implementing extended work rosters and adding additional staff to manage access and collection of income.

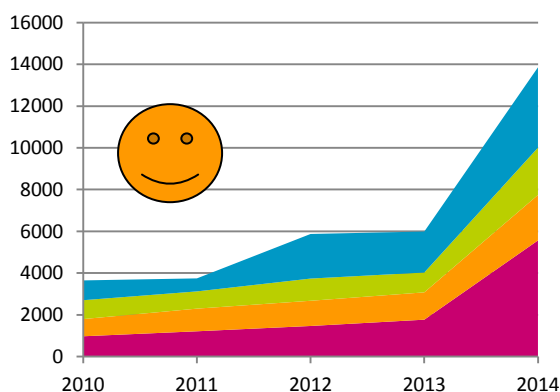


Figure 3. A tripling of visitor numbers in the last four years.

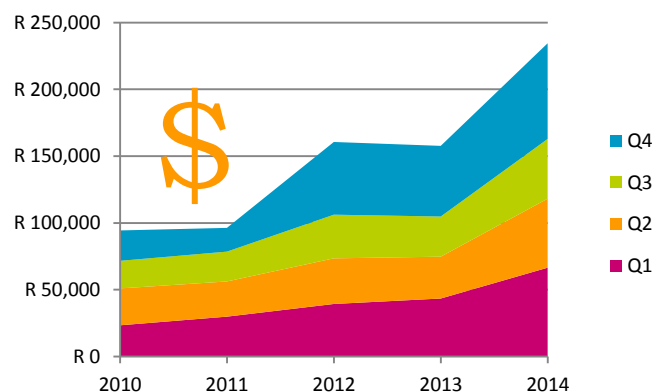


Figure 4. A doubling in income from visitors in the last four years.

3 CONSERVATION PLANNING

3.1 A tender for the provision of a professional service provider to conduct a hydrology and geohydrology study and to produce a hydrodynamics model for Rietvlei was advertised during the previous quarter. Eight tender offers were received and were evaluated by tender evaluation and bid evaluation committees during this quarter.

A report with a recommendation was written by Bongani Mnisi to be submitted to the Supply Chain Management Portfolio Committee early in the new year. It is envisaged that the successful bidder will be appointed early in 2015.

3.2 The Diep Estuary Management Plan requires minor edits and updates in order to align the plan with the requirements of the new Estuary Management Protocol.

Koos Retief attended a National Departmental Workshop during which the details of how to amend Estuary Management Plans to align with the New Protocol were clarified. The edits and updates to the document will be done early in 2015.

3.3 A report on the Establishment of Protected Area Advisory Committees (PAACs) for the City of Cape Town's 16 Nature Reserves was submitted to the Energy, Environmental and Spatial Planning's Portfolio Committee on 05/11/2014.

The Committee approved the process to establish these advisory committees, and this will be advertised as part of a public participation process in 2015.

3.4 Below image is an extract from the City's Ecosystem Status mapping of 2011. The colour codes indicate the levels of threat experienced by the respective vegetation types in the Milnerton Area and in Table Bay Nature Reserve (see Figure 5).

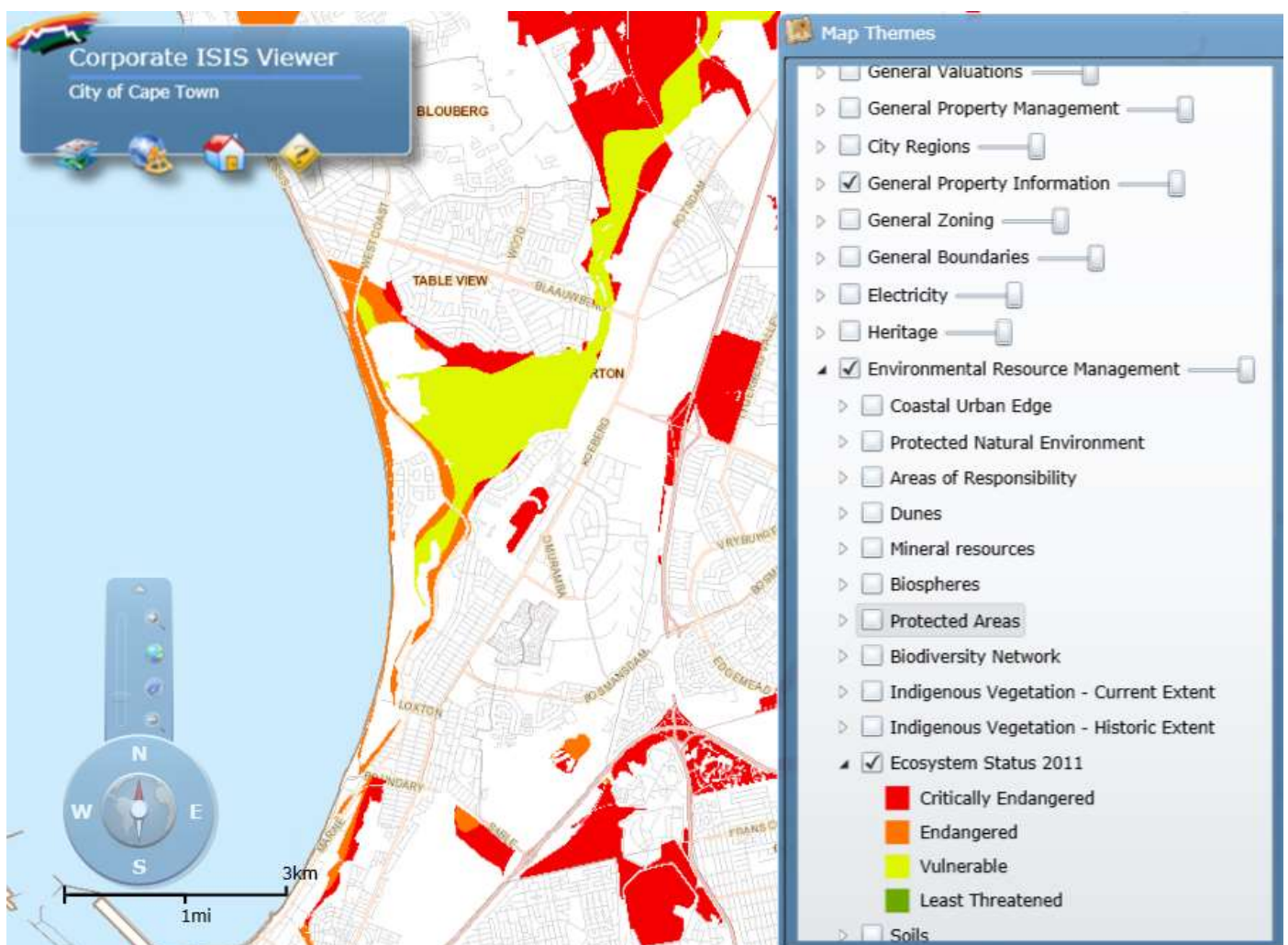


Figure 5. Ecosystem Status of natural remnants in the Milnerton Area (as per 2011).

4 FLORA

4.1 Terrestrial invasive alien vegetation clearing

was focused in the Diep River Section, Milnerton Ridge Section, Rietvlei along the R27, Milnerton Racecourse and the Milnerton Lagoon adjacent to the Golf Course. The main target species included Port Jacksons, Manatoka's, Aloes, Palm trees, emergent weeds, kikuyu grass and various other garden plants such as Yuccas (see Figures 7-8).

This work was undertaken by Field Rangers and Expanded Public Works teams based at the Nature Reserve, and utilising transport provided by the Nature Reserve.

4.2 Aquatic weed removal was focused in the Milnerton Canal near Milnerton Ridge. The target species was Water Hyacinth.

This work was undertaken by Expanded Public Works team based at the Nature Reserve, and utilising transport provided by the Nature Reserve.

All invasive vegetation clearing work is reported on a monthly basis to the Invasive Species Unit at Westlake Conservation Centre. Annual work-load assessments will be done in 2015 to determine staff and budgetary requirements for invasive alien vegetation clearing in the new year.

Neighbours and visitors are requested to contact the Nature Reserve office if they become aware of alien plants in the Nature Reserve.



Figure 6. The indigenous bulb *Ornithogalum thyrsoides* (Chincherinchee) with a partly developed flower stalk.



Figure 7. Example of an alien Wild Tobacco (*Nicotiana glauca*) plant, which is native to South America, that was removed.



Figure 8. Several Yucca plants, native to the Americas, that were removed from the Milnerton Ridge boundary in the Nature Reserve.

4.3 The mowing of vegetation in the Nature Reserve that was historically done with tractors and “bossie-kappers” has been discontinued many years ago. “Bossie-kapper” machines were used to mow as much of the vegetation down as low as possible, and as far into the wetland as the machines could go. This however caused massive destruction to the biodiversity and wildlife. The City of Cape Town however decided to proclaim the natural areas around Rietvlei as a Nature Reserve, which means it cannot be managed as an urban park anymore. Legislation prohibits anyone from destroying any vegetation in a Nature Reserve. The only areas where any vegetation may be removed, notwithstanding other legislation, are where firebreaks are required for legal purposes to prevent fires from spreading onto nearby properties.

5 FAUNA

5.1 An integrated bird census was conducted on 17/10/2014. The census was done by the Nature Reserve team and volunteers and covered 11 survey sections (see Figures 9-11 for details).

The water birds numbered a total of 2,392 birds comprising of 36 species. This is 615 more birds than in the same quarter of the previous year.

These included 22 Great crested grebe, 2 Little grebe, 91 White pelican, 93 Whitebreasted cormorant, 14 Reed cormorant, 18 African darter, 24 Grey heron, 11 Purple heron, 12 Little egret, 7 Yellowbilled egret, 10 Sacred ibis, 11 Glossy ibis, 1 Hadedda ibis, 2 African spoonbill, 225 Greater flamingo, 302 Egyptian goose, 152 Yellowbilled duck, 17 Cape teal, 26 Redbilled teal, 33 Cape shoveller, 2 African marsh harrier, 11 Common moorhen, 730 Redknobbed coot, 43 Blacksmith lapwing, 1 Pied avocet, 4 Blackwinged stilt, 23 Kelp gull, 447 Hartlaub's gull, 2 Caspian tern, 6 Swift tern, 12 Sandwich tern, 3 Whiskered tern, 3 Pied kingfisher, 1 Malachite kingfisher, 24 Cape wagtail, and 7 Mallard hybrids.

Additional species sightings included Spotted thickknee, Greyheaded gull, Large grey mongoose. Cape white-eye, Karoo Prinia, Whitethroated swallow, Cape canary, Pied crow, Southern Red bishop, Klaas's cuckoo, Yellow-billed kite, Common waxbill, Bokmakierie, and Pintailed whydah.

Any keen birders who want to participate on the bird censuses are welcome to volunteer their time between 09:00 and 12:00 on the predetermined dates. The next bird censuses will take place on 16 January, 17 April, 17 July, and 16 October 2015. Please call the office to confirm.



Figure 9. African Darter with a piece of string stuck inside its beak (photo: Riana Deysel).

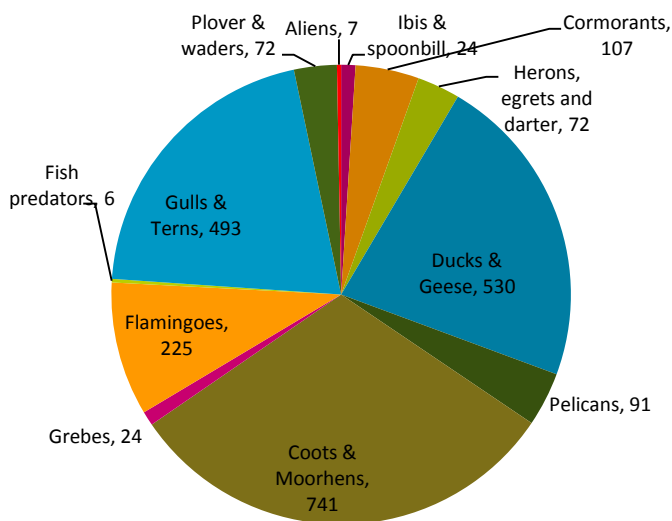


Figure 10. Pie chart of bird groups recorded during the bird census.

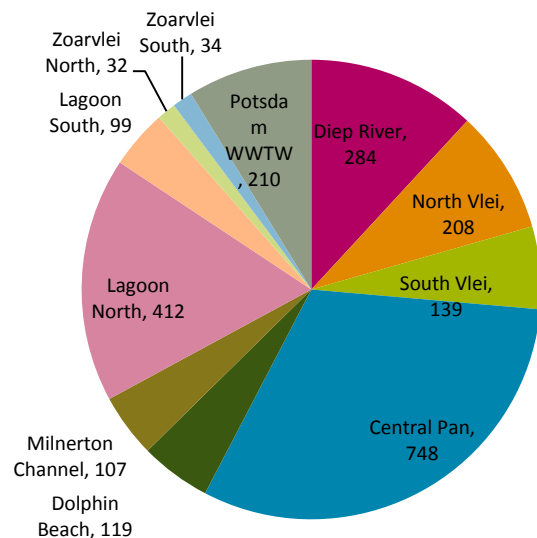


Figure 11. Pie chart of the numbers of birds per survey section.

5.2 Various fauna sightings were made during this quarter. See some Figures 12-16 below:



Figure 12. An Angulate tortoise.



Figure 13. A nest with Egyptian goose eggs.



Figure 14. A Mole snake curled up next to a tree in a parking area.

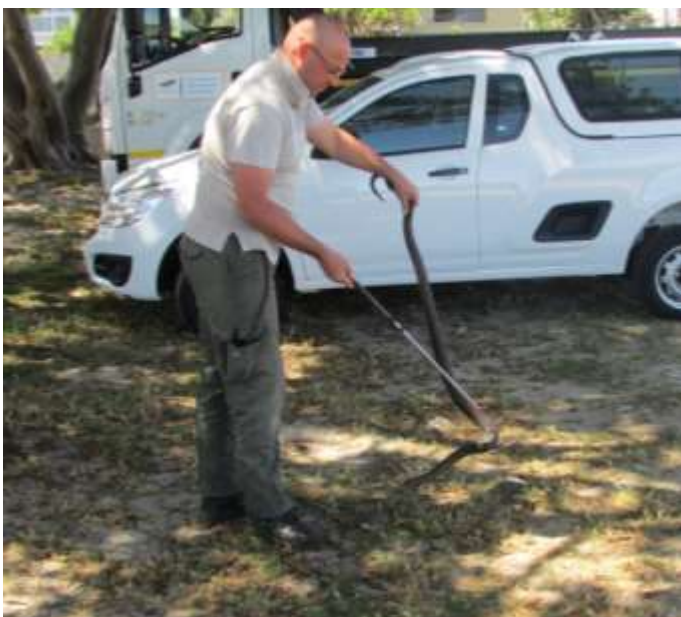


Figure 15. Koos Retief removing a Mole snake from a parking area.



Figure 16. An SPCA Wildlife Unit officer relocating a Mole snake.

5.3 Wildlife photography at the Rietvlei wetlands often captures wonderful sights in nature. Frieda Prinsloo graciously agreed that some of her photographs may appear in this report (see Figures 17-19).



Figure 17. Caspian Tern with a fish caught from Rietvlei (photo: Frieda Prinsloo).



Figure 18. Cape Shoveler with a dozen ducklings (photo: Frieda Prinsloo).



Figure 19. Cape Dwarf Chameleon (photo: Frieda Prinsloo).

6 SOIL

Soil Erosion is being monitored on an ongoing basis in the Nature Reserve. Due to the fact that the Nature Reserve is primarily low-lying, very little soil erosion takes place. No soil or erosion management work was conducted during this quarter.

7 WATER

7.1 Rainfall records at Table Bay Nature Reserve are recorded from two locations (Rietvlei Water Area and Milnerton Racecourse) onto a central database.

Below Figure 20 indicates the rainfall records from Rietvlei and Milnerton Racecourse for the year of 2014, plotted over the average rainfall pattern for the Nature Reserve since 2000. Despite high rainfall earlier in the year, measurements went below the average towards the end of the year. Only 27,5mm fell in Rietvlei and 33mm in Milnerton Racecourse during this quarter.

Figure 21, however indicates that the accumulation curve of the total annual rainfall at Rietvlei and Milnerton Racecourse during 2014 is well above the average rainfall accumulation curve for the Nature Reserve. This means that much water still remains in the wetland system during summer, which is also evident from high numbers of wading birds (such as flamingos) that still persist in the seasonal pans.

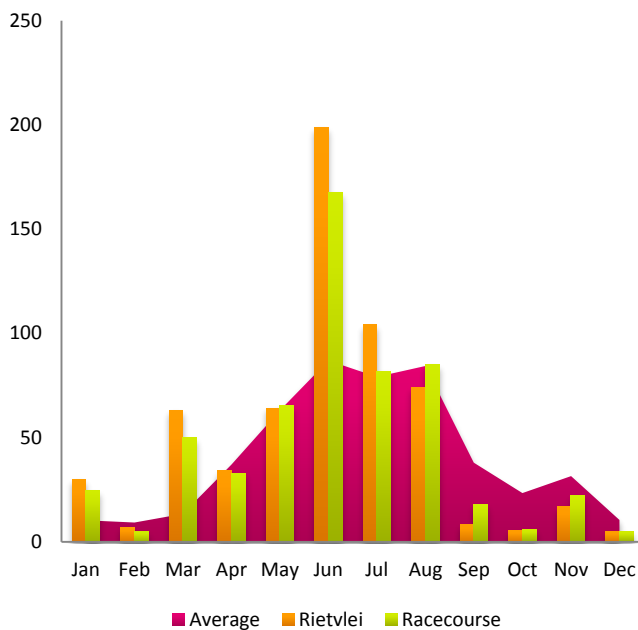


Figure 20. Monthly records plotted over the average.

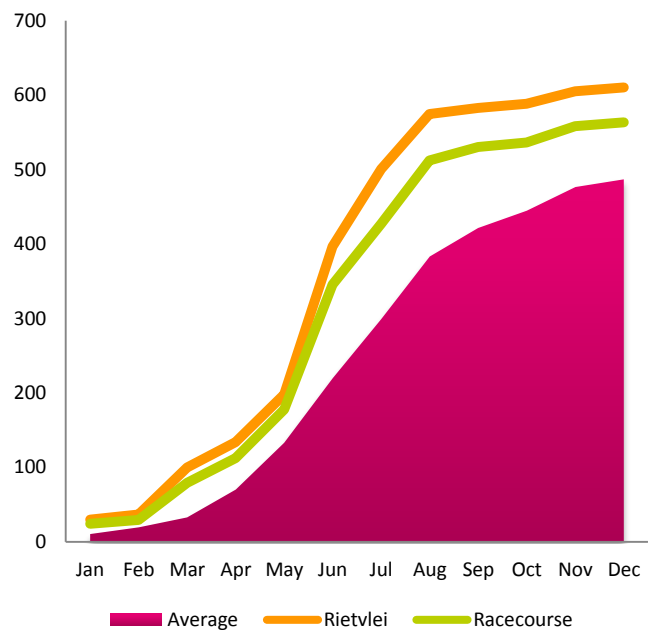


Figure 21. Rainfall accumulation plotted over average accumulation.

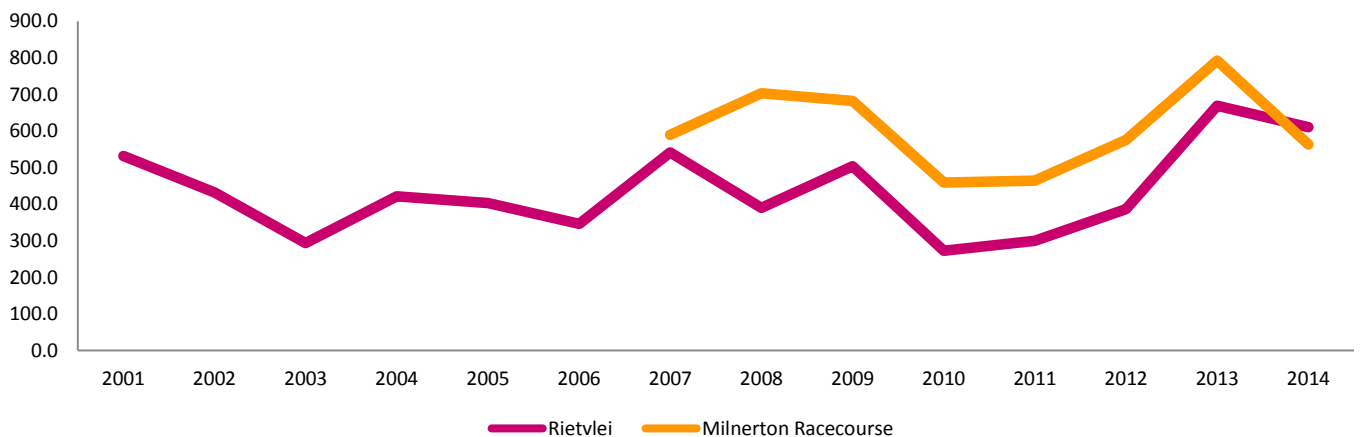


Figure 22. Total annual rainfall pattern since 2001.

8 FIRE

8.1 Firebreaks were maintained at the Fynbos Corridor at Stepney Road, the Table View Boundary, the Heron Water's Complex boundary, as well as along Pentz Drive between SANCCOB and the Table View Soccer Club.

8.2 Several wildfires occurred in the nature reserve, including at the following sections:

- 1 fire in the Milnerton Lagoon Section;
- 1 fire in the Rietvlei Section near the Blaauwberg Road Bridge; and
- 17 fires in the Diep River Section (of which 2 were in the Fynbos Corridor, 2 along the railway line, 2 near the Killarney Race Track, 1 near the Container Terminal, and 10 between Gie Road and the railway line).

These fires have all been mapped and this data will be used to update the vegetation age map. All the burnt areas are also cleared of all litter after a fire.

Below is an example of a mapped fire boundary from a fire that occurred at the Wave's Edge Wetland on 28/09/2014, during the previous quarter (see Figure 23-24).



Figure 23. A mapped fire boundary from a fire that occurred at Wave's Edge Wetland on 28/09/2014.



Figure 24. One of the numerous fires that occurred in the Diep River this quarter.

9 PEOPLE, TOURISM & EDUCATION

9.1 Stakeholder Engagement

- Table Bay NR staff attended no less than 23 official meetings with stakeholders;
- The reserve facilities were used to benefit no less than 523 people over 22 event days; and
- Environmental education and outreach benefited no less than 392 people over 15 event days.
- The Nature Reserve was visited by 3,849 visitors in this quarter, bringing in R71,586 in income.

9.1.1 Internal Meetings

Table Bay Nature Reserve staff attended no less than 14 internal meetings during this quarter:

- 01/10/2014: Designing new quarterly report templates for Branch (Tygerberg NR);
- 06/10/2014: Induction meeting for NQF5 conservation learnership candidates (NCC offices);
- 10/10/2014: Technical evaluation of tenders for geohydrology study at Rietvlei;
- 14/10/2014: Second technical evaluation of tenders for geohydrology study for Rietvlei;
- 31/10/2014: North Region Management meeting;
- 07/11/2014: Branch Entertainment Day;
- 21/11/2014: Site meeting about reservation of Erf19624, Brooklyn, for a power substation;
- 28/11/2014: North Region Health & Safety meeting;
- 28/11/2014: North Region Management meeting;
- 04/12/2014: Branch Management meeting (Witzands Aquifer NR);
- 08/12/2014: Discussion on draft recreational water use by-law (Maitland HO);
- 09/12/2014: Bid Evaluation Committee meeting for geohydrology study for Rietvlei (Civic Centre);
- 11/12/2014: City's environmental policy review discussion (Milnerton Civic Centre); and
- 12/12/2014: Staff year-end function.

9.1.2 External Meetings

Table Bay Nature Reserve staff attended no less than nine external meetings during this quarter:

- 09/10/2014: Rietvlei Management Working Group;
- 09/10/2014: Blaauwberg Development Area Environmental Liaison Committee;
- 10/10/2014: Zoarvlei Management Advisory Committee;
- 15/10/2014: Site meeting with Milnerton Riding Club about lease renewal application;
- 30-31/10/2014: Estuary Management Planning review workshop (Waterfront);
- 25-28/11/2014: CPUT Nature Conservation diploma student evaluations;
- 05/12/2014: Zoarvlei Management Advisory Committee;
- 10/12/2014: Site meeting with HENCHEM at Waves' Edge and Dolphin Beach; and
- 11/12/2014: Rietvlei Management Working Group.

9.2 Partnerships and Benefit to People

9.2.1 Rietvlei Education Centre Usage

The usage of the Rietvlei Education Centre, excluding visiting school groups, generated about 47 person days of benefit to people over three event days.

DATE	GROUP	ACTIVITY	PERSON DAYS
09/10/2014	Rietvlei Management Working Group	Meeting	10
13/11/2014	Friends of Rietvlei	Evening talk	25
20/11/2014	Blaauwberg development Area: ELC	Meeting	12
TOTAL			47

9.2.2 Rietvlei Boma Usage

The usage of the Rietvlei Boma generated 476 person days of benefit to people over 19 event days.

DATE	GROUP	ACTIVITY	PERSON DAYS
03/10/2014	Property Management	Teambuilding	17
13-14/10/2014	Invasive Species unit, ERMD	Health and Safety Training	16
17/10/2014	Property Management	Workshop	10
22/10/2014	EPWP working group	Health & Safety	19
3-4/11/2014	EPWP	Environmental Management Training	20
10/11/2014	Aristea Primary School	Biodiversity lesson	122
13/11/2014	City Parks	IERM meeting & workshop	20
17-18/11/2014	EPWP working group	Smart living training (CTEET)	56
21-22/11/2014	Table View Girl guides	Overnight/camp	20
27/11/2014	Planning & Building Development Mngt	District function/award ceremony	40
28/11/2014	IDP & OPM Department	Staff Workshop	26
05/12/2014	Finance: Treasury	Management Team Strategic session	25
11/12/2014	EPWP working group	Snake awareness training	37
12/12/2014	EPWP working group	Year-End function	28
15/12/2014	Table View SAPS	Year-End function	20
TOTAL			476

9.2.3 Environmental Education and Outreach

Environmental Education and Outreach, including the now famous school holiday programmes, generated 392 person days of benefit to people over 15 event days.

DATE	GROUP(S)	LEARNERS	TEACHER +ADULTS	PD'S	PROGRAMME
11/10/2014	Somerset West Bird Club	3	12	15	Guided bird walk
18/10/2014	FoR Family Action Day	8	5	13	Discovery Race
24/10/2014	Capricorn Primary School	48	0	48	Outreach: Grade 7 Careers Expo
25/10/2014	New Apostolic Church	0	27	27	Guided walk
01/11/2014	1 st Milnerton Sea Scout Cubs	7	3	10	Bird identification for Bird Badge
10/11/2014	Aristea Primary	122	5	127	Joined SANCCOB biodiversity
12/11/2014	St Cyprians School	49	2	51	Joined SANCCOB biodiversity
21/11/2014	Table View Girl Guides	9	1	10	Overnight/camp
22/11/2014	Table View Girl Guides	9	1	10	Overnight/camp
11/12/2014	Holiday group	13	4	17	Fishing holiday programme
12/12/2014	Holiday group	13	3	16	Fishing holiday programme
13/12/2014	Holiday group	6	2	8	Fishing holiday programme
17/12/2014	Holiday group	11	1	12	Fishing holiday programme
18/12/2014	Holiday group	12	2	14	Fishing holiday programme
19/12/2014	Holiday group	11	3	14	Fishing holiday programme
TOTALS		321	71	392	TOTALS

9.2.4 Friends of Rietvlei Collaborations

The Friends of Rietvlei’s “Rietvlei Action Day” was held on 18/10/2014. This event was a collaborative effort between the Friends of Rietvlei and the Table Bay Nature Reserve staff. A similar “open day” event is being planned for 2015.

9.2.5 Memorable images from this quarter’s Education and Outreach activities are reproduced below:



Figure 25. Fishing Programme group at the Rietvlei shore.



Figure 26. The biggest catch of the Fishing Programme (4,5kg).



Figure 27. Staff doing career guidance at Capricorn Primary School.



Figure 28. Table View Girl Guides at an overnight camp.



Figure 29. St. Cyprians Primary School learners taking part in a miniSass activity.



Figure 30. St. Cyprians Primary School learners taking part in a miniSass activity.

9.3 Visitors and Income

9.3.1 Income from visitors at the Rietvlei Water Area during this quarter was R71,586 from 3,849 visitors. This is the most income ever recorded in any quarter at Rietvlei, and is over R26,000 more than the previous quarter. Below Figures 31-32 indicate the last quarters (October to December) over the last four years.

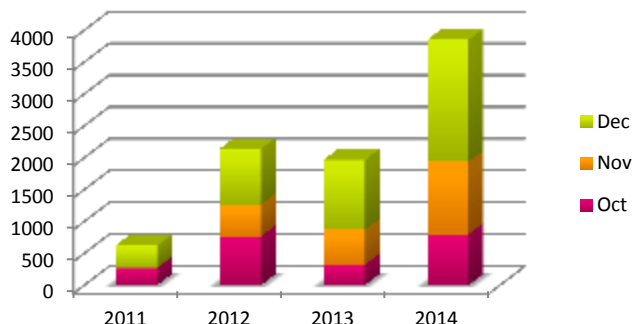


Figure 31. The last quarter visitor numbers since 2011.

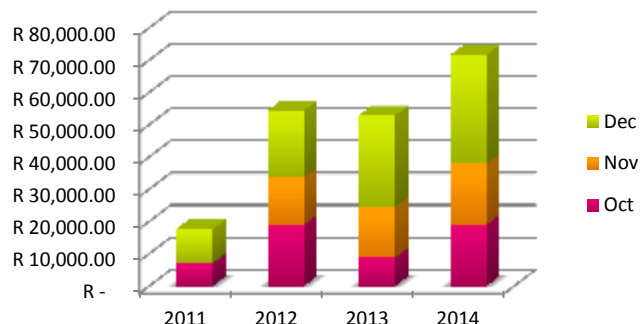


Figure 32. The last quarter income since 2011.

9.3.2 The above-average records for visitors and income throughout 2014 are indicated below:

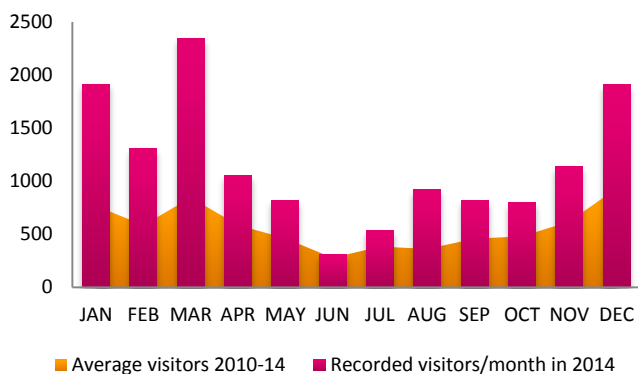


Figure 33. Visitor records for 2014 plotted over the average.

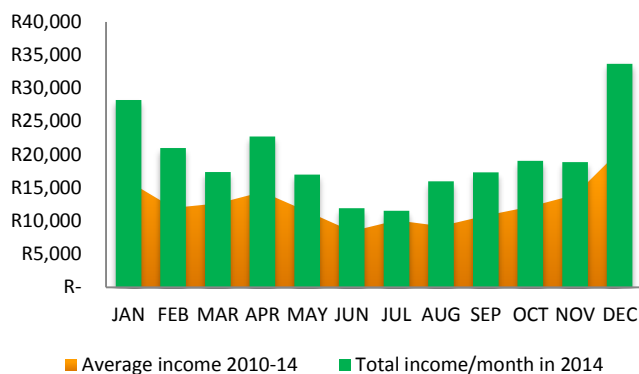


Figure 34. Income generated in 2014 plotted over the average.

9.3.3 The trend of increased use of the Nature Reserve since 2010 is demonstrated by Figures 35-36 below which translates into a tripling in visitor numbers and a doubling in income over the last four years.

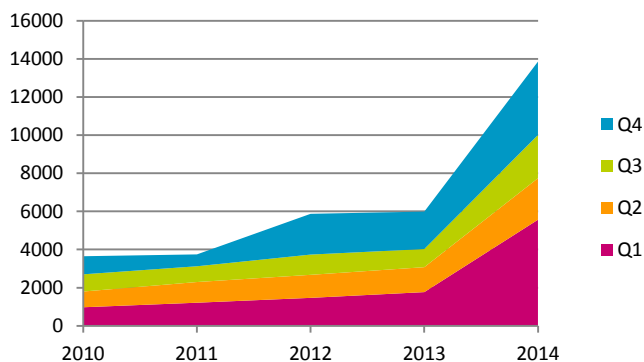


Figure 35. Breakdown of visitor trend by quarter.

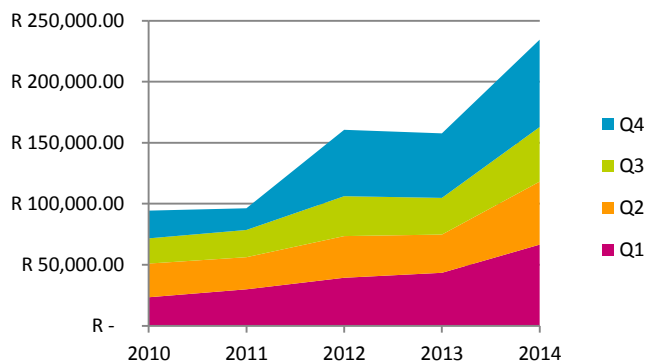


Figure 36. Breakdown of income tren by quarter.

9.3.4 The Cape Radio Flyers lease renewal application has not been resolved by the Property Management Department yet. All objections to the lease renewal have been evaluated and a report, via Subcouncil 1, is being drafted to serve before full Council. It is anticipated to have a formal decision from Council on the matter during the first quarter of 2015.

10 STAFF

10.1 The Staff Establishment at Table Bay Nature Reserve was expanded to 14 permanent staff with the transfer of Trevor Rieb from the North Region Compliance Management team to the position of Visitor Controller at the Rietvei Water Area.

Trevor also received a special award from the City as a small recognition of his tenacious perseverance in his long service history with the City. Trevor continues to serve the City despite experiencing severe adversity as a result of an injury he sustained whilst on duty. Below Figures x-x are images of staff that recently joined the Reserve.

10.2 Training of Table Bay Nature Reserve staff amounted to 39 person days of training over 17 training event days. The training interventions are listed below:

- 13/10/2014: Koos Retief attend **SAP Cost Centre Owner training** (Paul Sauer Building) – 1 person day;
- 06-10/10/2014: CPUT Students (3) attend **Fynbos Identification Course** – 15 person days;
- 22-24/10/2014: Derick Coetzee attend **training for Shop Stewards** – 1 person day;
- 23-24/10/2014: Clinton Roux and Kyle Kelly attend **report writing training** – 4 person days;
- 08-09/11/2014: NQF2 Learners (3) attend **alien species identification training** at Tokai – 6 person days;
- 19-21/11/2014: NQF5 Learners (3) attend **Business Communications training** – 9 person days; and
- 11/12/2014: NQF5 Learners (3) receive **learner support** – 3 person days.

10.3 Three students from the Cape Peninsula University of Technology (CPUT) that were employed at Table Bay Nature Reserve successfully completed the practical requirements of the National Diploma course in Nature Conservation. The three students are Braden Wilkinson, Damon Hope and Stuart van Blerk.

Koos Retief attended interviews at the CPUT to select new student that will be employed at Blaauwberg Nature Reserve and Table Bay Nature Reserve in 2015. The students that have accepted their appointments are Daniel Ferrezuelo (Blaauwberg Nature Reserve), Hester Pentz and David Copley (Table Bay Nature Reserve).

10.4 The current NQF2 Learnership will come to an end in the new year. An advertisement for the new Learnership intake for 2015 was circulated via various networks. Interviews will be conducted during the next quarter, and it is anticipated that three new Learners will be appointed at Table Bay Nature Reserve.

10.5 General staff matters

- **A Professional Driver's Permit (PrDP)** renewal was issued to Koos Retief.
- **Annual medical screenings** were conducted with staff on 01 and 05/12/2014.



Figure 37. Derick Coetzee (Visitor Controller).



Figure 38. Trevor Rieb (Visitor Controller).



Figure 39. Fundiswa Sigwayi, Worker.

11 LAW ENFORCEMENT

11.1 The draft Recreational Water Use By-law for the City of Cape Town was reviewed internally by the managers of the various water areas in the City. A workshop was held to collate all the manager's inputs. The amended document will return to the Public Participation Unit. It is anticipated that the Draft By-law may be advertised for public comment in the new year.

11.2 Removal of displaced peoples' structures at Diep River and Milnerton Lagoon Sections of the Nature Reserve was undertaken during this quarter. Table Bay Nature Reserve staff worked with the Paarden Eiland City Improvement District (PECID) as well the City's Anti-Land Invasion Unit and the Displaced People's Unit.

11.3 Illegal vehicle access in the Coastal Zone was reported by residents from Sunset Beach. Steps will be taken to improve the barriers that prevent vehicles from accessing onto the dunes (see below Figure 40).



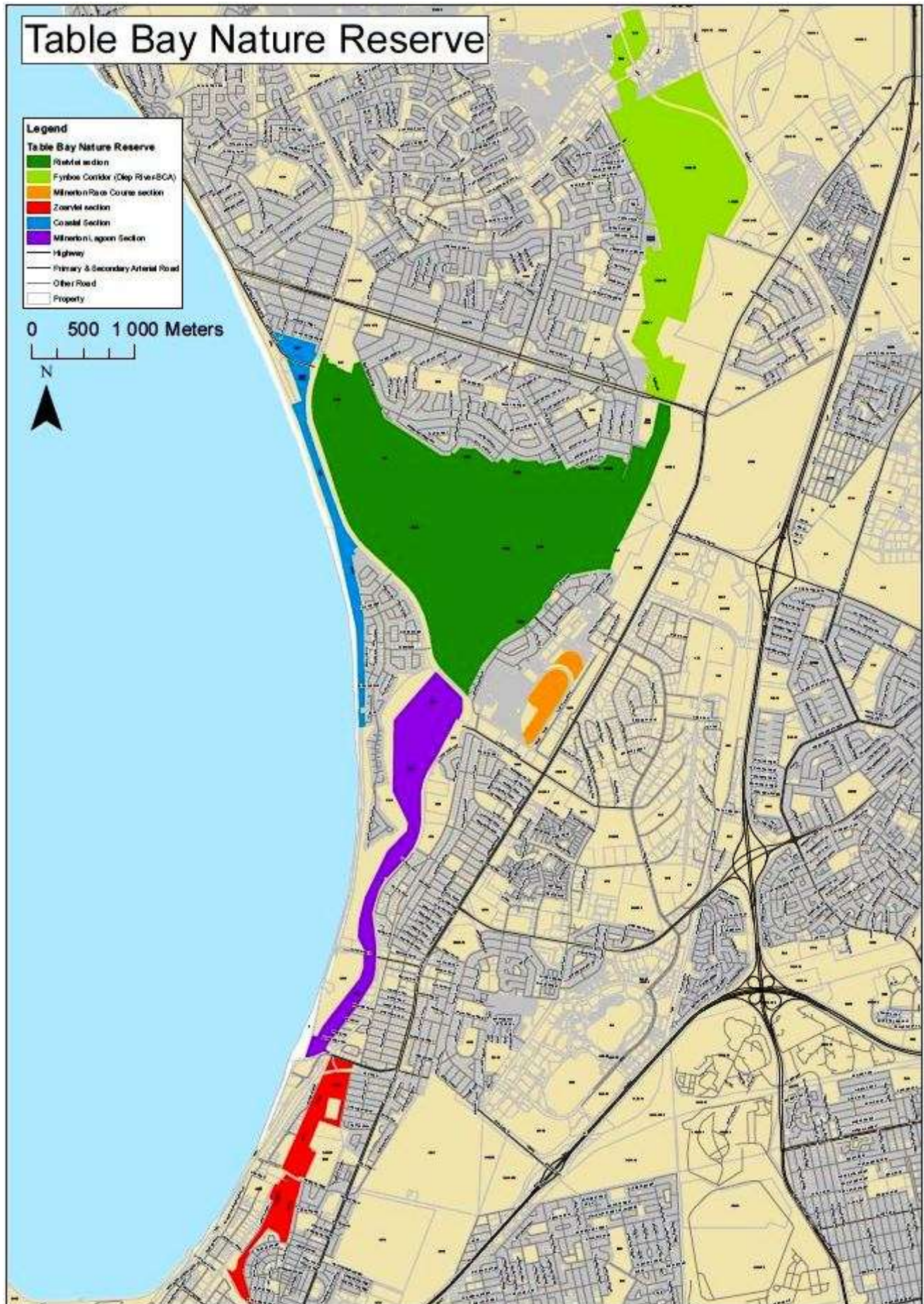
Figure 40. Illegal off-road vehicle access in the coastal zone.

12 INFRASTRUCTURE & EQUIPMENT

The following infrastructure and equipment repairs and maintenance was undertaken during this quarter:

- Servicing and repairing all vehicles when required;
- Retro-fitting high sides to the 5 tonne tipper truck in order to carry bigger loads;
- Repairing broken fencing at the Table View Soccer Club boundary, near Pentz Drive;
- Repairing damaged sign boards in the Diep River Section at Gie Road;
- Repairing broken lights and a malfunctioning boom gate at the Rietvlei gate house.
- Repairing a blocked drain at the Rietvlei public ablution block;
- Watering trees, trimming lawns and picking up litter around the picnic areas;
- Large scale litter clean-ups and dumping removal at the Zoarvlei, Diep River, Milnerton Lagoon, and Milnerton Ridge Sections;
- Path maintenance at Milnerton Racecourse and the SANCCOB connection to Rietvlei;
- Removal of an old disused boardwalk in Milnerton Lagoon;
- Removal of old fencing at Rietvlei along the R27; and
- Flattening of jumping ramps made by BMX riders in the nature reserve.

APPENDIX A: MAP OF RESERVE



APPENDIX B: PRESS ARTICLES

Snakes are best left alone

ESMÉ ERASMUS

[@erasmusesme](#)

Many people’s first reaction when they find a snake in their garden, is to kill it.

But about 80 % of snakebites occur due to people trying to interfere, catch or kill a snake, warns Shaun MacLeod, co-ordinator of the Western Cape snake emergency rescue volunteer team and director of Reptile Education Awareness Consultants (Reac).

Just last week Shaun captured a meter-long Cape cobra which was hiding among firewood at Liezl Hugo’s home in Raymond Crescent, Duynfontein.

“The animal was spotted in the backyard near the sliding door last Monday by the nanny. The owner was concerned for her young child of eighteen months old,” he said.

“Unfortunately I had to unpack braai wood and move items to find the snake.

“It was in my opinion hunting mice when it was discovered and ‘ran’ for cover,” Shaun said.

A mole snake was also captured at Afrox in Kuils River last week.

With spring in the air, many reptiles are coming out of hibernation.

Shaun’s advice is to leave the snake alone and give it an opportunity to escape, or to call a snake catcher.

“Stand back and admire them. See them for their beauty and magnificence, but keep an eye on where the animal is,” he recommended.

“Snakes only bite when you attack them.

“Killing a snake is nothing to be proud of. Snakes may be scary to some, but every living thing on the planet has a purpose.

“Let’s not succumb to ignorance by destroying what we fear, but rather learn more about snakes, their behaviour and why they are important cohabitants and why we should look out for them,” he said.

There is no real way of keeping snakes off your property, Shaun said. “Keep your grass cut short, trees well trimmed and clean up all your building rubble, just to mention a few, then there is less likelihood that snakes will reside on your property. In short, keep your garden tidy,” he said.

▶ Contact Shaun for advice on and the relocation of snakes on 082 532 5033.



A scary sight for most people, this Cape cobra was captured at a Melkbosstrand home last week and released elsewhere in nature.

PHOTO: SHAUN MACLEOD

Plan in place to beat back invasive wasps

Dedicated teams trained in invasive wasp control are trying to control the black and yellow wasps that have invaded gardens.

The European paper wasp (*Polistes dominula*) and the German wasp or yellow-jacket (*Vespa germanica*) have found the Cape metro and Boland ideal habitats suited for their expansion.

However, given their invasive nature, concern has arisen that if these wasps are left uncontrolled, they may spread to other towns and provinces where the climate is even more suited to their domination.

“The National Environmental Management Biodiversity Act (NEMBA), lists both species as invasive, which require control by means of an invasive species management programme,” says city mayo member for energy, environmental and spatial planning, Johan van der Merwe.

These insects have the potential to create problems ranging from being a nuisance to serious economic impacts in the wine, deciduous fruit and beekeeping industries.

The German wasp in particular is aggressive and there are several reports of them stinging workers during harvesting. They are known to attack and kill honeybees and infiltrate bee hives, which is detrimental to the honey industry.

“We urge all residents to take note and report any increase in the number of these wasps at their homes or businesses. In this way residents will assist the city in determining which areas to focus on and prevent the potential nuisance and impact these wasps might have” he said.

► Residents requiring assistance with the removal of these wasps can visit www.capetowninvasives.org.za/edrr/target-list to report any nests that they have found.



The European paper wasp is a medium-sized wasp (20 mm to 35 mm) with wavy yellow and black markings on the abdomen and orange antennae. The wasp builds papery nests in wall cavities, under roof eaves, and in any gaps they can find.



The German wasp is also a medium-sized wasp (15 mm to 40 mm) with yellow and black markings on the abdomen, but it has black antennae. A record 750 000 wasps were recorded on a farm in Somerset West in 2002. The German wasp is aggressive, especially if the nest or surrounding areas are disturbed. This wasp nests in the ground.

Wasps make themselves a dangerous nuisance

Two wasp species which are highly invasive, are spreading their wings and have been most active in Brackenfell, Kuils River and Kraaifontein, as well as Cape Town, the Boland and surrounding areas.

These areas been found to be the ideal habitats for the European paper wasp (*Polistes dominulus*) and the German wasp or yellow-jacket (*Vespa germanica*).

The City of Cape Town has raised concern that because of their invasive nature, if left uncontrolled, the wasps could spread to most towns in the Western Cape and even other provinces where the climate is even more suited to them.

According to the National Environmental Management Biodiversity Act (NEMBA), both wasp species are listed as Category 1b invasive species, which need to be controlled by means of an invasive species management programme.

Ulrike Irlich is the project manager of the recently established Early Detection Rapid Response Programme set up by the City of Cape Town to investigate and tackle the spread of these buzzing creatures.

She advises the public to leave well alone and, if they find a nest, to refrain from disturbing the creatures or trying to spray them with

insecticide, which may make them more aggressive.

She says they generally nest under roofs, inside poles and inside pole cavities such as those next to washing lines and fences.

"One starts and the rest follow there and accumulate," she says adding, "We urge people to get in touch with us and we'll send out our team to take care of them."

According to a press release issued by the City of Cape Town, in overseas cases of invasion involving both species the insects can create problems from being a nuisance to their presence impacting on the wine, deciduous fruit and beekeeping industries.

The German wasp in particular is known to be aggressive and cases have been reported of them stinging workers harvesting grapes and other fruits. They can also present a hazard to people who unintentionally disturb a colony. They are known to attack and kill honeybees and infiltrate bee hives, which is detrimental to the honey industry.

If you find a nest or are bothered by these wasps you can visit www.capetowninvasives.org.za/edrr/target-list and also log onto the volunteer website or send an email to edrr@capetown.co.za or call 021 712 1434 or 021 712 1944.



■ The European paper wasp is a medium-sized wasp (20mm to 35mm) with wavy yellow and black markings on the abdomen and orange antennae.

■ The German wasp is also a medium-sized wasp (15mm to 40mm) with yellow and black markings on the abdomen, but it has black antennae. A record 750 000 wasps were recorded on a farm in Somerset West in 2002.



City plans to save Table View beachfront

SUMMER JACOBS

The City of Cape Town have brought forward five conceptual transport options to combat the increased urban pressures and rising sea levels along the Table View beachfront.

These options were introduced to Bloubergstrand residents in a workshop presented at the Bloubergstrand Library Hall last Thursday. Its aim is to mitigate the impact of sea level rise and improve the recreational amenity of the area. This would ultimately lead to saving and preserving the dune corridor which seemed to be the main concern of residents who attended the workshop.

Led by Senior Professional Officer Lorryn Steenkamp from the City's Spatial Planning and Urban Design department, the options presented were the result of an assessment report undertaken by L'Aquar consultants with input from various expert City officials.

Ms Steenkamp explained the study's intent was to investigate the potential of rationalising the transport infrastructure, including parking, along Marine Drive to concept design level. The rationalisation's aims included, among others, to improve the pedestrian, cyclist and recreational environment and maintain a reasonable level of service during normal weekday peaks for traffic movement along Marine Drive.

Ms Steenkamp explained three

elements were common across all options presented, which included: a five metre promenade on the road edge of the dune; dedicated 1.5 metre cycle lanes as part of road designs; and a two metre median between dual carriageway options. The options are as follows:

● Option 0: Current scenario

Ms Steenkamp explained that doing nothing about the current situation was an option where the existing situation would remain as is.

● Option 1: Shift inland

Option 1.1

This option would see Marine Drive and Beach Boulevard consisting of two lanes in each direction. Parking lots would be relocated inland to where Marine Drive is currently located and existing parking lot areas would be rehabilitated into dune and a five metre promenade. The new dune corridor would then be extended to 17.4 metres wide.

Option 1.2

This option also consists of Marine Drive and Beach Boulevard consolidated as a dual carriageway but parking lots will be removed and replaced with kerbside parking. The existing parking areas and Marine Drive would be rehabilitated into dune and a five metre promenade. This will see the new dune corridor being extended to 25.8 metres. "This option brings forth the debate of the loss of parking versus the gain of the dune," said Ms Steenkamp.

Option 1.3

This option sees the removal of Marine Drive. Beach Boulevard would be upgraded to one lane in each direction. Parking lots would be relocated to the grass area between Marine Drive and Beach Boulevard. Existing parking areas would be rehabilitated into dune and a five metre promenade. The new dune corridor would extend to a further 25.8 metres wide.

● Option 2: One way couplet

Option 2.1

Beach Boulevard would be converted into two lanes north bound while Coral Road would be converted into two lanes south bound. Parking lots would be relocated to the current verge area. The existing parking areas and Marine Drive will be rehabilitated into dune and a five metre promenade. The new dune corridor would extend to 25.8 metres wide.

Option 2.2

As in option 2.1 Beach Boulevard and Coral Road would be converted into two lanes leading north and south bound. Parking lots will be removed and replaced with kerbside parking along Beach Boulevard. Existing parking areas and Marine Drive would be rehabilitated into dune and a five metre promenade. The new dune corridor would extend to 25.8 metres wide.

Ms Steenkamp explained the option chosen would determine the cost of the project.

One resident, Mandy DeMatta,



■ The effect of rising sea levels on the Table View area was discussed at a workshop at the Bloubergstrand Library Hall last week.

PICTURE: COLIN BROWN

thought the workshop was insightful, but feels the "lack of maintenance is evident" on the beach.

"Any future upgrade to the Blouberg beachfront should include a maintenance plan that has secure funding to ensure the viability of the project for the longer term," she said.

Christiana Groenewoud another resident, said: "Every time a storm comes, you've got sea lashing from one side and storm water causing erosion for the other. If erosion continues at this rate without maintenance before the beachfront upgrade is rolled out there will be dire consequences," said Ms Groenewoud.

Johan van der Merwe, the City's mayoral committee member for energy, environmental and spatial planning, says the Blouberg Sub-council requested that a development framework be prepared for the Table View area to address

issues around future development, the improvement of public space and the realisation of economic and tourism potential.

"This request was the catalyst for the Table View Development Framework project. He says once an option is chosen, the City's Spatial Planning and Urban Design Department will be responsible for drafting the development framework."

"This will be carried out in conjunction with the various City departments that have a role and an interest in the area. The Development Framework will guide the work carried out by these departments to ensure that the shared vision for the area, as contained in the framework, is implemented," said Mr Van der Merwe.

Comments on these options are welcome and may be submitted to Lorryn Steenkamp on 021 400 6614.

Sea level rise risks to Table View identified

The Table View beachfront road infrastructure has been identified as a risk to increased urban pressure and rising sea levels, according to the City of Cape Town's Sea Level Rise Assessment Report.

Now the city is looking at ways to accommodate the existing and future traffic demands on the Table View beachfront area.

One possibility for protecting infrastructure would be to reconfigure the current road infrastructure to allow for the widening of the existing dune corridor. It is foreseen that this would serve as a first level of protection against sea level rise.

"Such a reconfiguration would also enable increased economic and social opportunities for this area and for the broader metro," says mayco member for Energy, Environmental and Spatial Planning, Johan van der Merwe.

"A conceptual transport study was therefore undertaken to see whether a proposed reconfiguration would in fact result in a sufficient measure of protection against sea level rise. The study successfully identified a number of feasible options for reconfiguring

the transport infrastructure within the area. With the highest rate of urbanisation in the country, we certainly cannot rest on our laurels if we want to create a financially and environmentally sustainable future."

After public consultation, a preferred transport option will be identified and included as part of a broader development framework for the Table View beachfront as a local area planning priority for the Blaauwberg District.

The development framework must prepare a holistic plan for the Table View beachfront area that responds to the issues of coastal management, sea level rise, built environment pressures, traffic management, public amenity and economic development, by giving direction to future development that will guide both public and private decision-making and investment.

During the preliminary investigations, it apparently became clear that the issues which the development framework sought to resolve were intimately linked to the road infrastructure of the area.

The city now urges residents to give input



Infrastructure along the Table View coastline is under pressure.

PHOTO: SEEFF BLOUBERGSTRAND

on the various transport options that have been identified in the draft report.

They will be presenting the outcomes of

the study at a public workshop on 27 November from 19:00 to 21:00 at the Bloubergstrand Library Hall in Andrew Foster Road.

City coastal plan ready for public comment

The city's draft Coastal Management Programme, developed, in part, to give effect to the Integrated Coastal Management Policy, is ready for comment.

Council adopted the policy - a first for a South African municipality, in September.

The policy seeks to mitigate the risks posed by climate change, and optimise the socio-economic and environmental potential the coastline offers to residents of Cape Town.

The city is the largest coastal metro in

South Africa with 307 km of coastline.

It is arguably its greatest socio-economic and environmental asset and it provides a critical support base to residents.

Interested parties have until 3 December to comment on the proposed programme.

For more information, send an e-mail to darryl.colenbrander@capetown.gov.za or visit www.capetown.gov.za/en/PublicParticipation/Pages/Coastal-ManagementProgramme.aspx

Sub-council outlines plans for beachfront maintenance and repairs

SUMMER JACOBS

Sub-council 1 discussed improvements to the beachfront, among other issues, at the monthly meeting on Thursday November 20.

A report tabled at the meeting outlined repairs and maintenance from Milnerton to Silwerstroom Strand.

A R60 000 project to repair the Sunset Beach boardwalks is due to be completed by month end.

Upgrades of ablutions in Melkbosstrand and Dolphin Beach are also due to be completed at the end of the month at a cost of R150 000 and R170 000 respectively.

Repairs and maintenance projects include work on post and rail fencing and parking lots.

Signs pointing out demarcated areas where dogs are allowed will also be erected at Melkbosstrand.

The procurement process will start after the specified dog zones are approved.

Upgrades of ablution facilities are on the cards for Bloubergstrand, Milnerton Lagoon and Milnerton Woodbridge. Work is due to start in February next year.

Sub-council 1 chairwoman Heather Brenner also discussed the Table View beachfront conceptual transport options, to be pre-

sented at a public meeting at Bloubergstrand Library hall, in Andrew Foster Street, tomorrow, Thursday November 27, from 7pm to 9pm.

"The options are the long-awaited forerunner to the upgrading of Table View beachfront and the outcome will form the basis of the future for the beachfront area," said Ms Brenner.

For details, call Lorryn Steenkamp at 021 400 6614 or you can email lorryn.steenkamp@capetown.gov.za

Meanwhile, a decision to turn down the extension of a house shop permit sparked protest at the meeting.

Summer Greens resident Abdul Kashem argued the house shop was his only source of income.

Ward councillor Joy McCarthy said Mr Kashem's application had been turned down because he rented the premises and did not own it.

"The idea of the City house shop policy is that the owner may use a portion of his property to provide an income stream. Only people who comply with policy will be assisted," she said.

Mr Kashem left the meeting with a heavy heart, saying he did not know what he was going to do.

"This was my only source of

income. I need my house shop," he said.

Rezoning applications brought forward to council included: permission for a dental practice at 40 Porterfield Road, Table View; and an application to change the address at 219 Blaauwberg Road from a general residential zone to a business zone.

An application for temporary land use departure to permit an animal care centre has also been received. Decisions on all matters discussed are available on the City's website. For details, call the sub-council office at 021 550 1001 or 021 550 1060.

Tabletalk

Wednesday November 19 2014
 Editorial tel. 021 488 4230
 Advertising tel. 021 488 4147/4234
 Tabletalk est: 1987

INDEPENDENT
MY INDEPENDENT APP
AVAILABLE ON OUR APP

■ Frieda Prinsloo of Parklands sent in this picture of a Cape Dwarf Chameleon on fynbos in the Rietvlei part of the Table Bay Nature Reserve.



Sunset Beach residents upset over illegal dumping

FAATIMAH HENDRICKS

Trucks are dumping building rubble on vacant plots in Sunset Beach instead of taking it to dump sites that are further away.

In response to this complaint, the City of Cape Town has urged people who own vacant property to cordon it off to prevent access – or face the cost of cleaning up their grounds.

Sunset Beach resident Graham Combrink said he saw a tipper truck at the plot across the road from his home, dumping rubble.

As he saw what was happening, the driver had just finished dumping the rubble, but Mr Combrink managed to take down the truck's registration numbers.

He said it was an old white and yellow truck with no company signage on it.

Another resident, Frank du Plessis, said he saw a similar vehicle at a different vacant plot, near his house.

He spoke to the driver and asked where he was from and the driver told him he was from Grassy Park. He said when he confronted the man about dumping the rubble, the man asked him if he had actually seen him doing anything.

"But I saw him coming from the plot," explained Mr Du Plessis.

"He probably doesn't want to pay and that's why he just wants to dump," said Mr Du Plessis.

He said he suspected it was a



■ The two vacant properties in Sunset Beach where rubble is being dumped.

construction company doing building work in the area.

He said he saw a similar vehicle at a construction site, but the drivers and number plates were different. "Everybody is upset he is offloading everywhere," said Mr Du Plessis. "If nobody does anything about it, he will end up doing it for the next 10 years."

When Tabletalk went to inspect the two properties, there were mounds of sand with piles of stone and cement rubble. The properties

were easily accessible, with no fencing around them. Chairman of the Sunset Beach Homeowners Association (SBHOA), Peter Andrianos said he informed the police and private security company Crime Watch about the details of the registration number. He also lodged a complaint with the City.

"We are waiting to see what happens from there."

"The dumping was on private property, so the owners need to be notified," said Mr Andrianos.

"We are just waiting for clarity and then we will be notifying the owners."

The City's mayoral committee member for health, Benedicta van Minnen, said the owner of the property remains responsible for any items that may be dumped there. Therefore, she said, property owners should consider enclosing their plots.

Ms Van Minnen said the City can serve a notice in terms of the environmental health by-law, asking

the properties owners to clear the dumped rubbish.

"If owners do not respond to the notice, the City can then access the site and clear it on the owner's behalf – and the cost is then recovered from the owners through their rates account."

Ms Van Minnen said the City will investigate the incidents in Sunset Beach and then decide on the necessary action. "There are drop-off sites for rubble at Vissershok and Atlantis," she explained.

Keeping her ducks in a row

This Cape Shoveler made sure she had all her ducks in a row at Old Friends Hide at Rietvllei recently. This proved to be no mean task, since there were 15 ducklings she had to manage! Photographer Frieda Prinsloo is a regular nature buff and reckons 15 ducklings must be a record. Luckily she was there with her camera to capture the serene image. PHOTO: FRIEDA PRINSLOO



■ A shoot for a beer commercial went swimmingly in the Milnerton Lagoon on Thursday when extras and equipment were loaded onto this makeshift raft, which was then floated across the Diep River mouth to reach the set on the southernmost point of Woodbridge Island.

PICTURE: COLIN BROWN



Doing it for the birds

Staff of Table Bay Nature Reserve attended a clean-up on Lagoon Beach in Milnerton, hosted by seabird rehabilitation centre SANCCOB. Around eight million items of litter enter oceans every day. Between 700 000 and one million marine birds are killed every year due to entanglement or ingestion of this litter. Pictured, from left: Viwe Maposa, Mashudu Sikhwiwhilu and Pamela Mrebe.

■ Carla Voorn, of Flamingo Vlei, took this picture of a sunset from Pentz Drive in Flamingo Vlei. She comments: "I was blown away yet again by the beauty of Cape Town. Mother nature truly was showing off. On my way home, after a very busy and stressful Monday this is the view I was blessed with. How could I resist capturing it to share."

